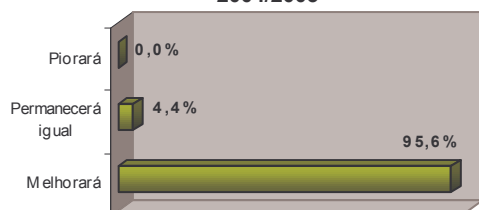


PESQUISA ANUAL DE CONJUNTURA ECONÔMICA DO TURISMO

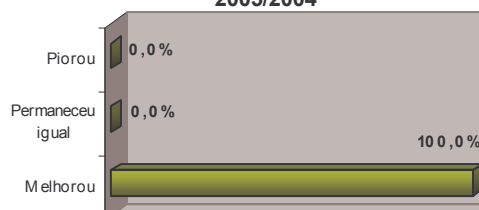
Março de 2005, ano I, número 1



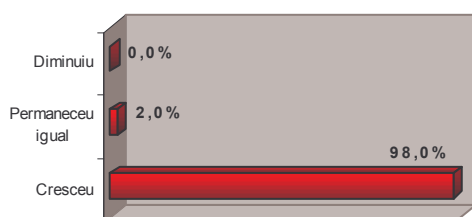
**Operadoras - Economia Brasileira
2004/2003**



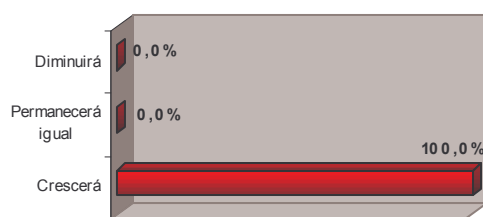
**Operadoras - Economia Brasileira
2005/2004**



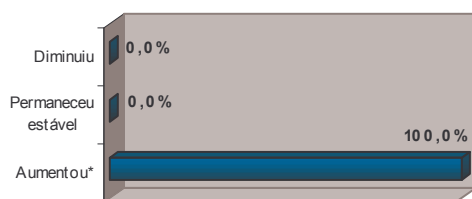
Mercado de Operadoras 2004/2003



Mercado de Operadoras 2005/2004

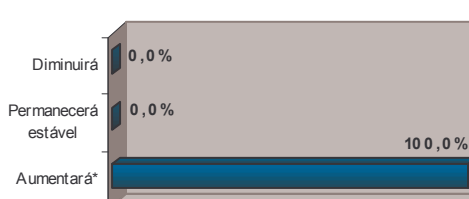


**Operadoras - Faturamento Bruto
2004/2003**



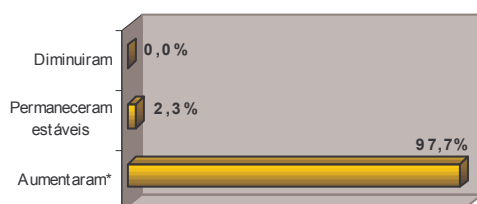
* Aumento verificado: 47%

**Operadoras - Faturamento Bruto
2005/2004**



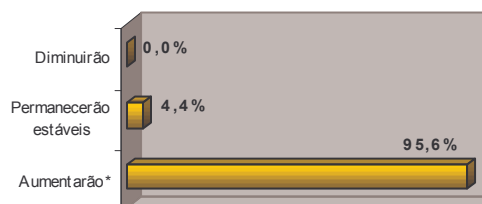
* Estimativa de aumento de 24,8%

**Operadoras - Postos de Trabalho
2004/2003**



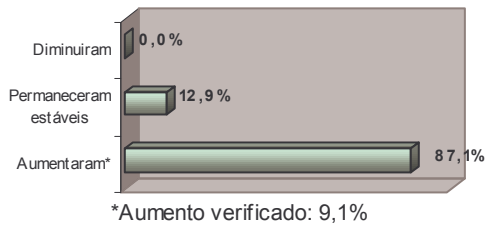
*Aumento verificado: 28,5%

**Operadoras - Postos de Trabalho
2005/2004**

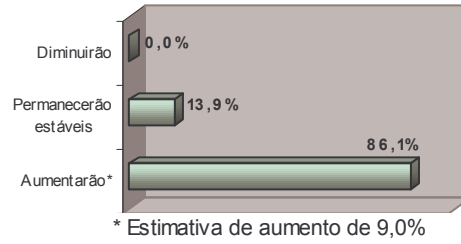


* Estimativa de aumento de 25,0%

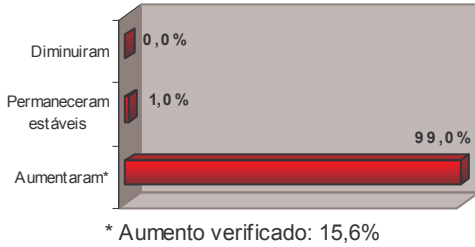
Preços Cobrados 2004/2003



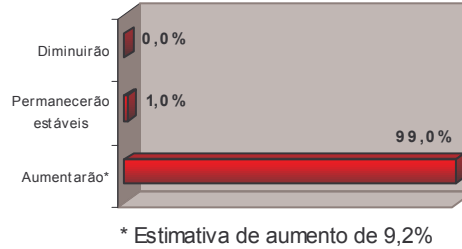
Preços Cobrados 2005/2004



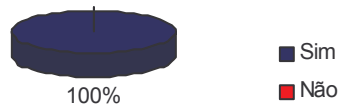
Custos Operacionais 2004/2003



Custos Operacionais 2005/2004



Intenção de realizar investimentos - 2005



Barreiras à expansão dos negócios

- 1 - Menor relevância
- 2 - Maior Relevância

